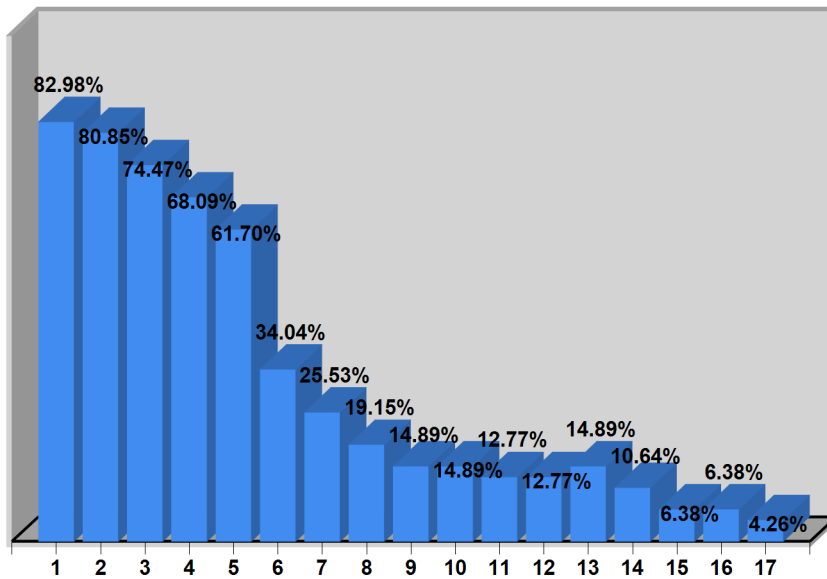


Provincia: **Corrientes**

Nomina: **Inscriptos**

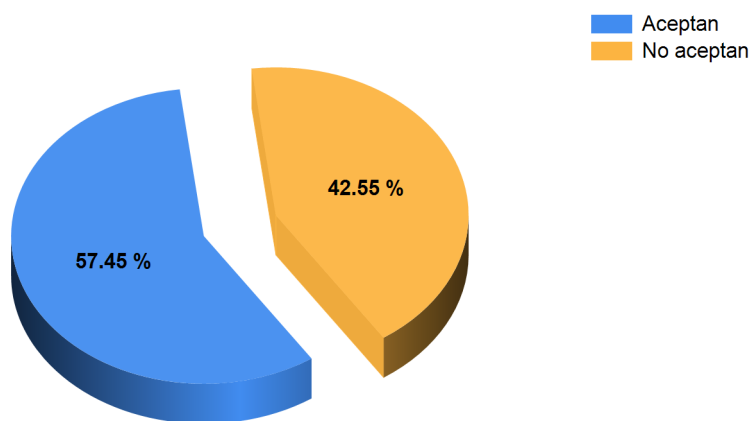
Cantidad de Legajos: **47 (TND: 15)**

Disponibilidad según edad del niño



| Edad | Cantidad de Legajos | % |
|------|---------------------|--------|
| 1 | 39 | 82.98% |
| 2 | 38 | 80.85% |
| 3 | 35 | 74.47% |
| 4 | 32 | 68.09% |
| 5 | 29 | 61.70% |
| 6 | 16 | 34.04% |
| 7 | 12 | 25.53% |
| 8 | 9 | 19.15% |
| 9 | 7 | 14.89% |
| 10 | 7 | 14.89% |
| 11 | 6 | 12.77% |
| 12 | 6 | 12.77% |
| 13 | 7 | 14.89% |
| 14 | 5 | 10.64% |
| 15 | 3 | 6.38% |
| 16 | 3 | 6.38% |
| 17 | 2 | 4.26% |

| Grupo de niños | Cantidad | % |
|----------------|-----------|----------------|
| Aceptan | 27 | 57.45% |
| No aceptan | 20 | 42.55% |
| Total | 47 | 100.00% |

Disponibilidad para Grupos de niños

| Discapacidad / Enfermedad | Cantidad | % |
|---------------------------|-----------|----------------|
| Aceptan | 2 | 4.26% |
| No aceptan | 45 | 95.74% |
| Total | 47 | 100.00% |

Disponibilidad para Discapacidades / Enfermedades

